

NOW AVAILABLE FOR SALE

±20,442 SF FREESTANDING MANUFACTURING BUILDING ON ±1.7 ACRES

- Second-story office area (with elevator)
- One (1) dock high door
- ±16' minimum clearance in warehouse area
- Heavy power
- Fenced and paved lot and yard space
- Less than ¼ mile to Hwy 92 and easy access to I-880

SALE PRICE: \$1,533,150 (\$75 PSF)

**27105
INDUSTRIAL
BOULEVARD
HAYWARD, CA**

FORMER FUJIFILM MANUFACTURING BUILDING



FOR MORE INFORMATION PLEASE CONTACT

Kenneth Morris

Vice President
Lic. 01312918
510.874.1983
ken.morris@cbre.com

Robert Ferraro

Senior Vice President
Lic. 00949584
510.874.1910
robert.ferraro@cbre.com

Mike Conn

Associate
Lic. 01370833
510.874.1957
mike.conn@cbre.com

CB Richard Ellis, Inc.
Broker Lic. 00409987

CBRE
CB RICHARD ELLIS



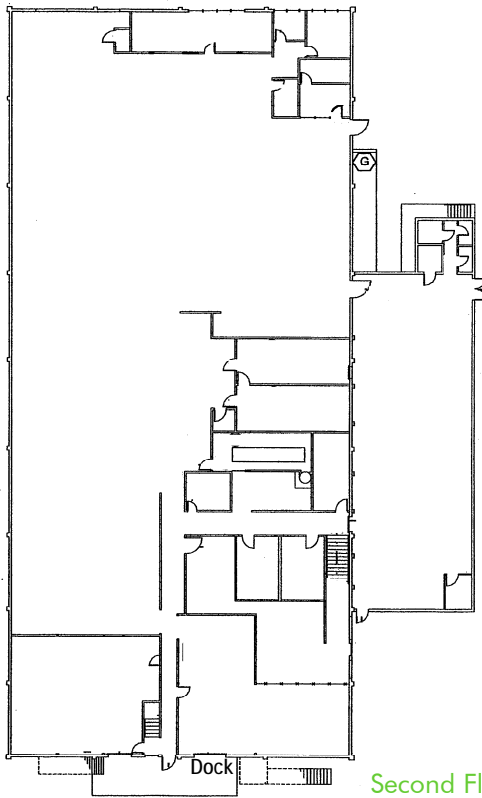
27105 INDUSTRIAL BOULEVARD HAYWARD, CA

AVAILABLE FOR SALE :: FORMER FUJIFILM MANUFACTURING BUILDING

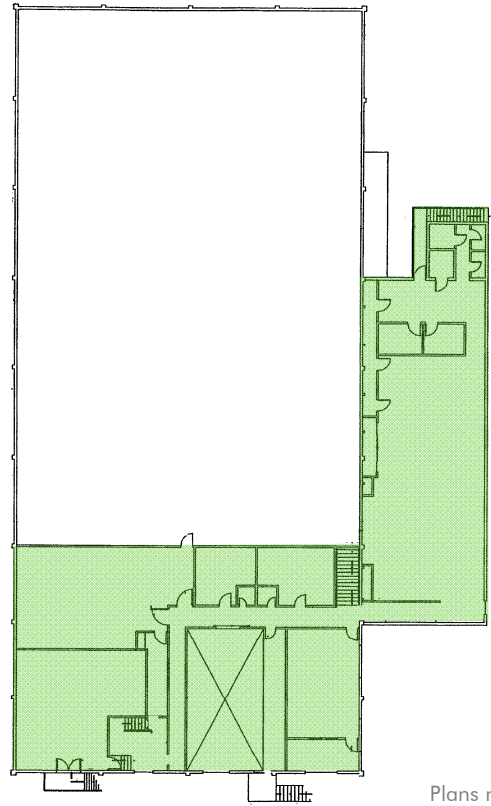
SITE PLAN



FLOOR PLANS



First Floor



Second Floor

Plans not to scale

FOR MORE INFORMATION PLEASE CONTACT

Kenneth Morris

Vice President
Lic. 01312918
510.874.1983
ken.morris@cbre.com

Robert Ferraro

Senior Vice President
Lic. 00949584
510.874.1910
robert.ferraro@cbre.com

Mike Conn

Associate
Lic. 01370833
510.874.1957
mike.conn@cbre.com

CB Richard Ellis, Inc.
Broker Lic. 00409987



CB Richard Ellis | 555 12th Street | Suite 900 | Oakland, CA 94607 | www.cbre.com/oakland

©2009 CB Richard Ellis, Inc. This information has been obtained from sources believed reliable. We have not verified it and make no guarantee, warranty or representation about it. Any projections, opinions, assumptions or estimates used are for example only and do not represent the current or future performance of the property. You and your advisors should conduct a careful, independent investigation of the property to determine to your satisfaction the suitability of the property for your needs.